

FM1110

Small tracker with internal GPS/GSM antennas



Description

FM1110 is light realtime tracking terminal with GPS/GLONASS and GSM connectivity, which is able to collect device coordinates and other useful data and transfer them via GSM network to server. This device is perfectly suitable for applications where location acquirement of remote objects is needed: fleet management, car rental companies, taxi companies, public transport, logistics companies, personal cars and so on. FM1110 can perform tasks on remote objects, such as monitoring engine status, controlling truck's door etc.

Applications



If You think, this is not enough to win ALL Your potential customers - please contact us to get advices how to use it in Your application!



FM1110

Accessories/features



Features

- Small and easy to mount case
- Internal GSM antenna and Internal GPS/GLONASS antenna allow mount FM1110 much easier
- Real Time tracking
- Smart data acquisition - based on time, distance, angle, ignition and I/O events allow to have precise online tracker
- Sending acquired data via GPRS (TCP/IP and UDP/IP protocols)
- Smart algorithm of GPRS connections for GPRS traffic saving
- Operating in roaming networks by preferred GSM providers list
- Events from I/O elements detection and sending via GPRS or SMS
- Scheduled 24 coordinates SMS sending when GPRS not available
- 5 geofence zones (rectangular or circle)
 - Auto Geofencing created for car towing detection and car theft prevention
- Deep Sleep mode (less than 2 mA power consumption)
- FOTA (firmware updating via GPRS)
- 3 operational modes (Home, Roaming, Unknown) based on operator
- Integrated scenarios:
 - Over speeding to secure driver and prevent penalties
 - Immobilizer function
 - Authorized driving (1-Wire® iButton ID keys up to 50 iButton keys) use to prevent stealing or indicate drivers
 - Trip start and end detection
- FM1110 supports a remote logs reading
 - FM1110 supports remote diagnostic logs functionality using GPRS. Possible issues resolving becomes faster. Manufacturer can read logs remotely using SMS/GPRS to diagnose the FM1110 and timely respond to the fault

Specification

GSM

- Quad-band 900/1800 MHz; 850/1900 MHz
- GPRS class 10 (up to 85,6 kbps)
- SMS (text/data)

GPS/GLONASS

- NMEA protocol compatible. Messages: GGA, GGL, GSA, GSV, RMC, VTG, TXT
- 32 channel GPS/GLONASS receiver
- -162 dBm sensitivity

Interface

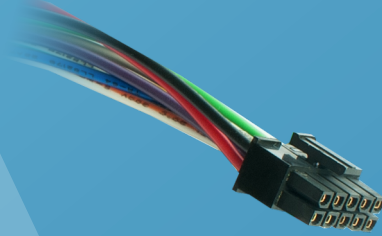
- 1 Digital Input Reserved for Ignition Status Monitoring
- 2 Digital Inputs
- 1 Analog Input (10V or 30V range)
- 2 Digital Open-collector Outputs (connecting external relays, LED, buzzers etc.)
- 1Wire® temperature sensor
- 1Wire® iButton
- Motion sensor
- Power supply (+10...+30)V DC
- Internal GSM antenna
- Internal GPS/GLONASS antenna
- Dimensions: L(65mm)xW(56,6mm)xH(18,9mm)
- 2 Status LEDs
- USB Port
- Configuration and firmware upload (FOTA and via cable)

Accessories

USB to mini USB cable



Main socket 2x5



Door sensors



Analog fuel sensor LLS-AF 20310



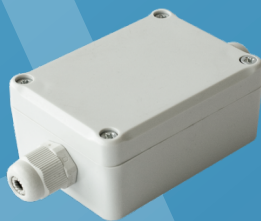
Alarm button



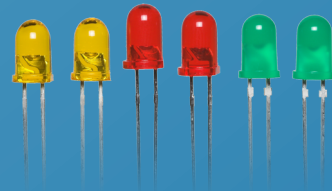
Relay 12V/24V



1Wire® temperature sensor (TTJ)



LED



1Wire® iButton and iButton reader



Buzzer

