



FM5300

GLONASS/GPS/GSM/GPRS Terminal
with two RS232 interface



Description

FM5300 is an advanced terminal with GLONASS/GPS positioning and connectivity and GSM/GPRS connectivity which is able to get device coordinates and other data and transfer them via GSM network. This device is perfectly suitable for real time object location and parameters monitoring. So you can track your remote objects (trucks, cars etc.) quickly and easily.

In case of no GSM coverage FM5300 can store up to 47000 records and once the GSM connection is established stored data will be sent, so you will not lose your data (coordinates, sensors data and etc.).

Applications



FM5300
Mounting Area

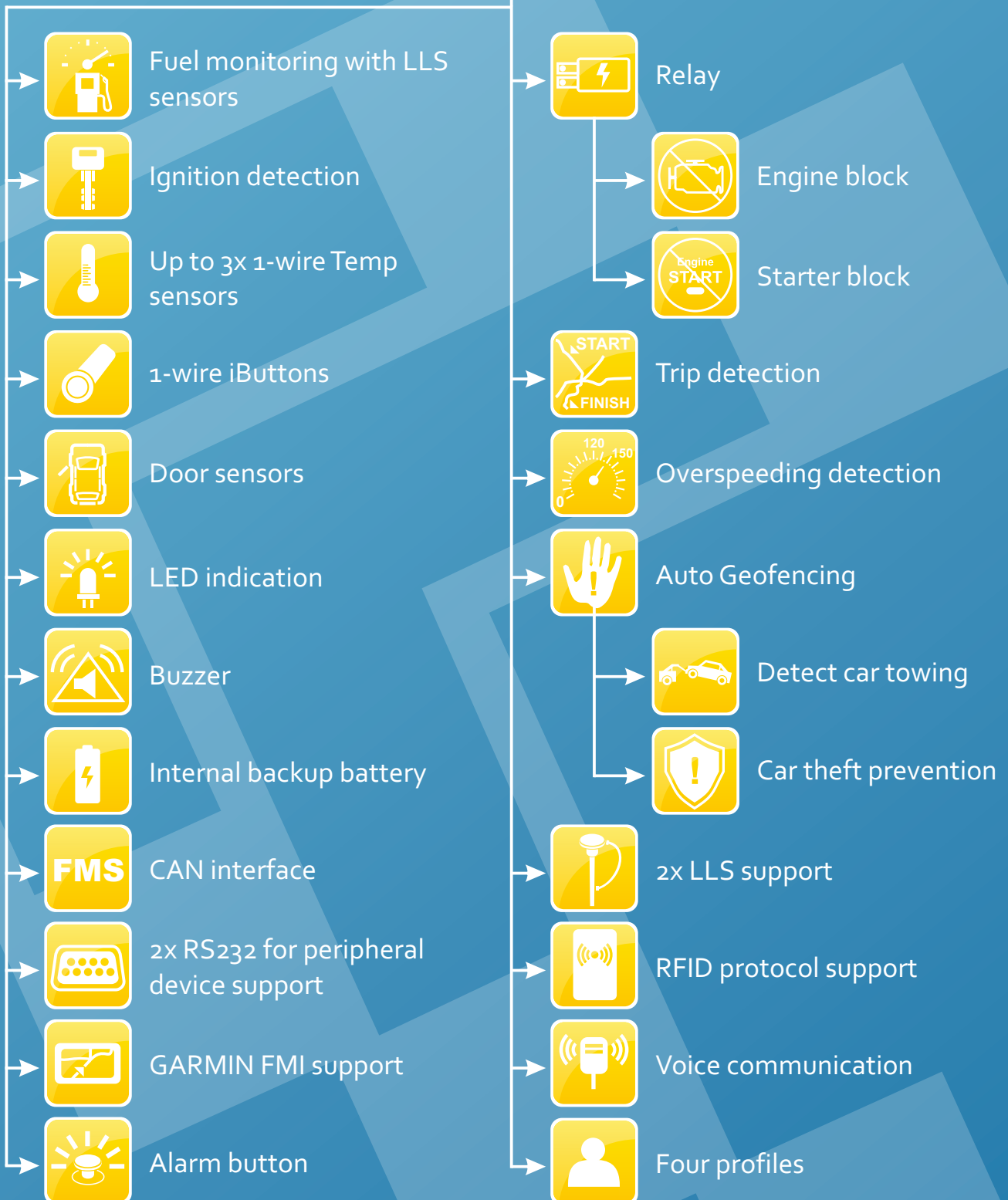
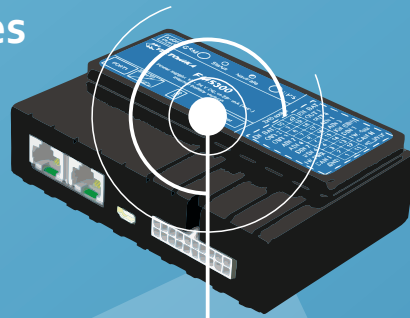
**If You think, this is not enough to win ALL
Your potential customers - please contact us
to get advices how to use it in Your
application!**



FM5300



Accessories/features



Features

- K-LN 200 support allowing remote download of DDD files and obtaining K-Line data from Tachograph *
- GPS/GLONASS coordinates and I/O data acquisition
- RealTime tracking
- Smart algorithm of data acquisition (time, distance, angle, ignition and event based)
- Sending acquired data via GPRS (TCP/IP and UDP/IP protocols)
- Smart algorithm of GPRS connections (GPRS traffic saving)
- Operating in roaming networks (configurable GSM providers list)
- Events on I/O detection and sending via GPRS
- Scheduled 24 coordinates SMS sending
- Deep Sleep mode (saving vehicle's battery)
- FOTA (firmware updating via GPRS)
- Accelerometer
- Four different profiles
- 20 geofence zones (rectangular or circle)
 - AutoGeofencing created for car towing detection and car theft prevention
- Small and easy to mount case
- Roaming dependent operation (GPRS traffic saving in roaming zones)
- Acceleration detection (harsh breaking, acceleration and cornering)
- Offline tracking
- Operation mode presets
 - Advanced overspeeding detection
 - Driver behavior monitoring (acceleration/breaking/cornering notifications to minimize vehicle exploitation costs)
 - Driver identification (1-Wire® iButton ID key)
- GPRS commands
- Voice communication
- RS232 peripheral device support:
 - GARMIN FMI support
 - 2x LLS support
 - RFID protocol support
- FM5300 has large internal Flash memory (16MB)
 - The memory can save up to 50000 records with the standard configuration. It is possible to disable data sending in Roaming and then device will store data in its memory till back to home area
- FM5300 can be used without a GSM connection
 - Additional function – Offline data logging – allows to download acquired data from FM5300 to PC via cable and later to upload it to TAVL server. This functionality helps to avoid high GPRS bills caused by expensive roaming operators and keep acquired data save until it is downloaded to PC
- FM5300 supports a remote logs reading
 - FM5300 supports remote diagnostic logs functionality using GPRS. Possible issues resolving becomes faster. Manufacturer can read logs remotely using SMS/GPRS to diagnose the FM5300 and timely respond to the fault

Specification

GSM/GPRS

- Quad-band 900/1800 MHz; 850/1900 MHz
- GPRS class 10 (up to 85,6 kbps)
- SMS (text/data)

GPS/GLONASS

- NMEA-0183, GGA, GGL, GSA, GSV, RMC, VTG protocol compatible
- 32 channel receiver
- -162 dBm sensitivity

Interface

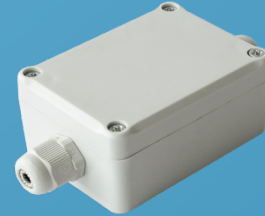
- 4 Digital Inputs for object status monitoring
- 4 Analog Inputs (switchable 10 V or 30 V range, 12 bit resolution)
- 4 Digital Open-drain Outputs (controlling external relays, LED, buzzers, etc.)
- 1-Wire® interface protocol
- CAN interface
- Power supply (+10...+30)V DC
- 2 Status LEDs
- USB interface
- 2x RS232 port
- Configuration and firmware update (FOTA and via USB cable)
- External GSM antenna
- External GNSS antenna
- Optional internal (or external) rechargeable NiMh battery with charge controller
- Voice interface (Rj11)
- Dimensions: L(104,1mm)xW(76,8mm)xH(31,5mm)
- Movement sensor

Accessories

USB to mini USB cable



1Wire® temperature sensor (TTJ)



1Wire® iButton and iButton reader



RFID



GARMIN navigation



CAN Interface



Alarm button



Voice communication



Rs232



If You think, this is not enough to win ALL Your potential customers - please contact us to get advices how to use it in Your application!